

# UNIVERSAL BREAKOUT PANELS



Designed to meet market requirements for safety in public spaces, the automatic door with panic break-out function is becoming increasingly popular, offering greater flexibility and ensuring optimal evacuation flow through emergency exits.

Portalp's panic break-out panels are universal and compatible with all mechanisms of the brand.

- Reliable and quick emergency opening
- Reassuring design
- Compliant with EN16005 standard





# BREAKOUT PANELS

Universal, they are compatible with all mechanisms, providing a wide opening in emergency situations.

In normal operation, the panic break-out door functions like a standard automatic sliding door.

In panic mode, the sliding panels and semi-fixed panels swing open to create a wide, unobstructed passage.

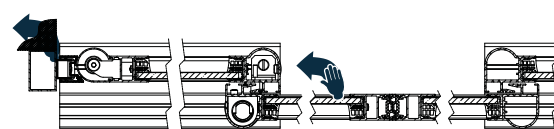


## Simple operation for effective emergency evacuation

In case of emergency, panic stricken people can fully open the door by simply pushing the sliding and semi-fixed panels.

The panic break-out door can thus be used as an emergency exit, but also when occasional passage of large items (cars, furniture, etc.) requires a wide opening.

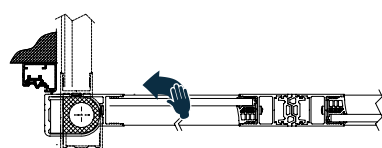
### FULL BREAKOUT OPENING (FBO)



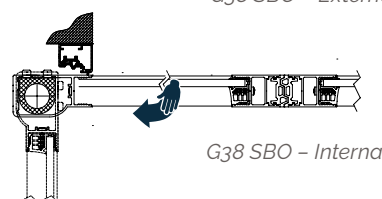
G38 FBO – Internal opening

### SIMPLE BREAKOUT OPENING (SBO)

In the case of a simple breakout door (SBO), only the sliding panels pivot manually to open according to the width of the opening.



G38 SBO – External swivelling



G38 SBO – Internal swivelling

## Robust and securing door frames

The door frames are made of G38 aluminum profiles. The frames of sliding and semi-fixed leaves have a rounded design to give a soft and protective perception for the user.

Sliding leaves swinging is made thanks to scissors profiles on the upper part. They allow a progressive and effortless movement on the whole closing and opening assembly.



## Typical applications



Emergency exit, emergency evacuation



Manual break-out opening

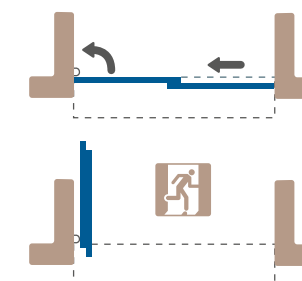


Passage of bulky items

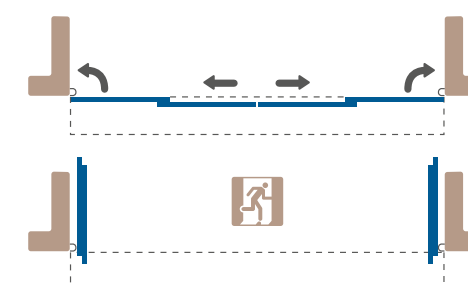
The clever assembling of these scissor profiles ensures excellent tightness under operator.

- The semi-fixed panel is fitted with a covering profile on the upper part. This profile provides effective sealing against the beam using a compression gasket, while the bottom of the panel features a brush seal.
- In normal operation, the top and bottom of the semi-fixed panels are held in place by spring-loaded stainless steel ball mechanisms that lock the panel securely in position. Height-adjustable, this system firmly locks the panels while still allowing easy manual opening and closing.
- Any panic break-out activation of the panels switches the door to manual mode, allowing the panels to be operated manually.

Double FBO sliding door  
2 sliding panels - 2 semi-fixed panels



Single FBO sliding door  
1 sliding panel - 1 semi-fixed panel

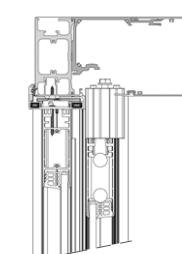
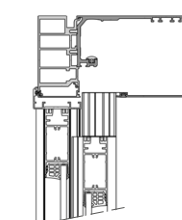
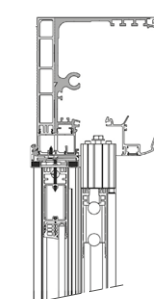


FBO panels are compatible with all mechanisms, allowing for flexible use.

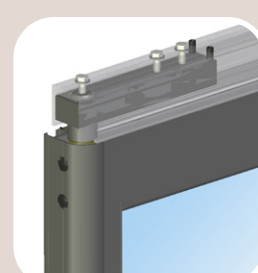
DIVA - FBO

RS - FBO

TINA - FBO



Scissor profiles sliding panels



Adjustment device for scissor profiles



Anti-pinch profiles



Bottom retention semi-fixed panels



Position adjustment +/- 8mm



Covering profile upper part



# BREAKOUT PANELS



Mechanism	RS	DIVA	TINA
Installation	FBO SBO	Surface applied / Between walls <sup>(1)</sup> Surface applied / Between walls <sup>(1)</sup>	Surface applied Surface applied
Structure		Aluminum	
Reinforced housing (H x D)	230 x 236 mm	200 x 175 mm	102 x 212 mm
Self supporting housing up to	According to charts	5 m	According to charts
Passage width min/max			
- Single sliding	700 - 1 200 mm	700 - 1 200 mm	700 - 1 200 mm
- Double sliding	900 - 2 400 mm	900 - 2 400 mm	900 - 2 400 mm
- 2 panels single telescopic	900 - 2 000 mm	-	-
- 4 panels double telescopic	1 800 - 4 000 mm	-	-
Passage height max.	2 800 mm	2 800 mm	2 800 mm
Panels weight max			
- Single sliding	1 x 100 kg	1 x 100 kg	1 x 100 kg
- Double sliding	2 x 100 kg	2 x 100 kg	2 x 100 kg
- 2 panels single telescopic	2 x 40 kg	-	-
- 4 panels double telescopic	4 x 40 kg	-	-

<sup>(1)</sup> According to charts: please contact us

## Equipment and options

Compliant with EN16005 Emergency Exit (by design)	●
Automatic door panel opening detection Anti-panic function	●
Manual safety	○
Mechanical locking	○
Natural satin finish, RAL paint coating <sup>(2)</sup>	○

<sup>(2)</sup> Other finishes, please contact us. ● Series ○ Option



Head office: Portalp - 4 rue des Charpentiers  
95330 Domont - France