

SW10/19 *Owner Manual*

Tel: 800.474.3667 **Email:** sales@portalp.com

Address: 16170 Lee Rd, Suite #100, Fort Myers, FL 33812

WWW.PORTALP.COM



GENERAL INFORMATION

The purpose of this manual is to familiarize you with your automatic door system. It is important to maintain your door system in compliance with the industry standards for safety.

It is your responsibility to inspect the operation of your door system on a daily basis to ensure that it is safe for use.

This manual will provide you with a description of the operation and maintenance requirements of your door. It also provides instructions for the Daily Safety Check.

Should the door fail to operate as prescribed in the Daily Safety Check or at any other time for any reason, do not attempt to repair or adjust the door. Call an AAADM Certified service technician. These technicians are trained to service your door in accordance with applicable industry safety standard.

CONTACT INFORMATION

Portalp USA, Inc

16170 Lee Rd. Suite 100

Ft. Myers, FL 33912

800-474-3667

www.portalp.com

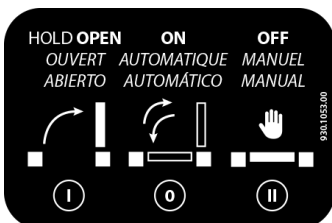
COMPLIANCE WITH INDUSTRY STANDARDS

The door system was designed to meet the latest operating and safety standards. To ensure continued safe operation of your door:

- Maintain door system in compliance with industry standards
- Apply proper decals and labels to door systems, and replace if they cannot be read or have been removed
- Complete annual inspections by AAADM inspector

OPERATION AND DAILY MAINTENANCE

The SW10/19 operators are equipped with a power switch and a function switch for convenience. The power switch (red) is located on one end cap and the function switch (hold open/on/off) is located on the opposite end cap.



POWER-supplies power to the operator when turned on (light is illuminated).

HOLD OPEN-door remains in full open position

ON-allows door to function automatically

OFF-door remains closed but can be used manually if not locked.

DAILY SAFETY CHECK: (All figures and diagrams are for purposes of illustration only)

Perform the following safety checks *daily* on each automatic swinging door to ensure your customers' safety and your own protection. Perform these tests while traffic is restricted from all detection and sensing zones.

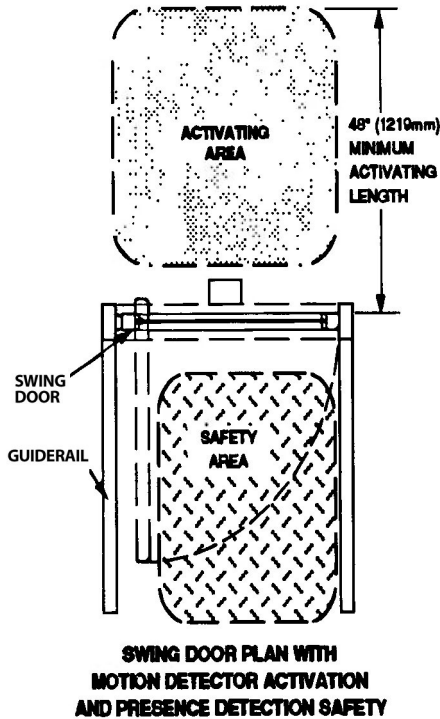


Figure 1

Sensor Activation / Presence Detection Safety

1. Check the electronic sensor by walking toward the door opening at a moderate speed. The door should start opening when you are about four feet from the door, open smoothly, and stop fully open without impact. Move slowly through the door opening (6 inches per second), stop in the swing path, and pause for 10 seconds. The door should remain open. If two-way traffic, repeat from the other side of the door.
2. Step out of the sensor zone. After a brief time delay (at least 1 1/2 seconds) the door should close smoothly and without impact.
3. For one-way traffic doors, approach the safety side of the door, then have someone else approach the activating side of the door.
 - If the door is equipped with an overhead-mounted presence sensor, as long as you are in the safety area of the door it should not open. (See Figure 1)
 - If the door is equipped with a door-mounted presence sensor, the door may start to open but should reverse, stop, or slow down. (See Figure 2).
4. Crouch motionless in the door opening for at least 4 seconds.
 - If the door is equipped with an overhead-mounted presence sensor, the door should not close.
 - If the door is equipped with a door-mounted presence sensor, the door may start to close but should reverse, stop, or slow down.

Caution: If safety sensor is not working, door may swing toward you without stopping.

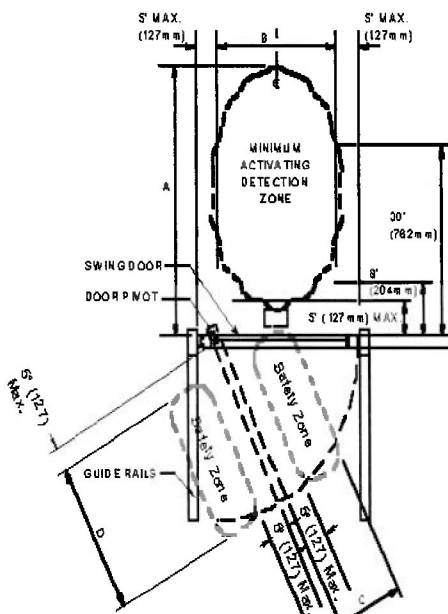


Figure 2

Floor Mat Activation/Floor Mat Safety

1. Step on the "opening" (activating) mat.
2. It is necessary to have a safety mat covering the entire area the door swings over. Step through the doorway onto the safety mat and remain motionless for 4 seconds. The door should remain open. Repeat at several locations on the mat. (See Figure 3 or 4)
3. Step off the safety mat. After a brief time delay (at least 1 1/2 seconds) the door should close smoothly and without impact.
4. With the door closed, step on the safety mat on the swing side. Have someone step on the activating mat. Door should remain closed as long as someone remains on the safety mat.

Caution: If safety mat is not working, door may swing toward you without stopping.

5. Check the mat molding and threshold. It should be complete and secured with all required screws.

Double Egress-Using Knowing Act

1. Double Egress doors are commonly activated by a knowing act switch. Momentarily operate knowing act switch. Doors should open smoothly and stop at fully open without impact. Doors should remain fully open for a minimum of 5 seconds before closing.
2. As the door closes, approach the door from the non-swing side, and the door should reopen. Continue across the threshold and stand motionless for 10 seconds. Door should not contact you.
3. Continue through the door and the door should start closing after a minimum of five seconds. Door should close smoothly and without impact.
4. Approach the safety side of the door. Have someone else activate the knowing act switch. If the door is equipped with an overhead-mounted presence sensor, as long as you are in the safety area of the door, it should not open. (See Figure 5)
5. If the door is equipped with a door-mounted presence sensor, the door may start to open but should reverse, stop, or slow down. (See Figure 6)
6. Repeat for the other door panel.

Figure 3

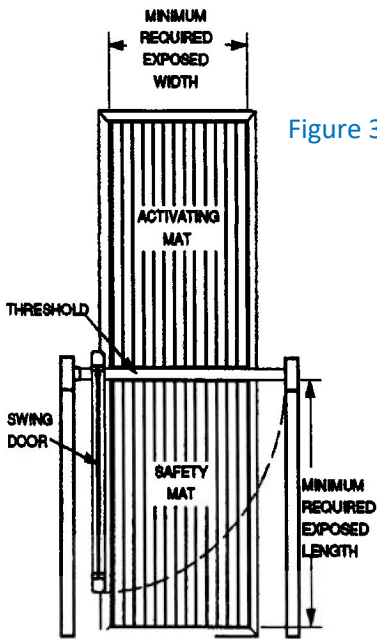


Figure 4

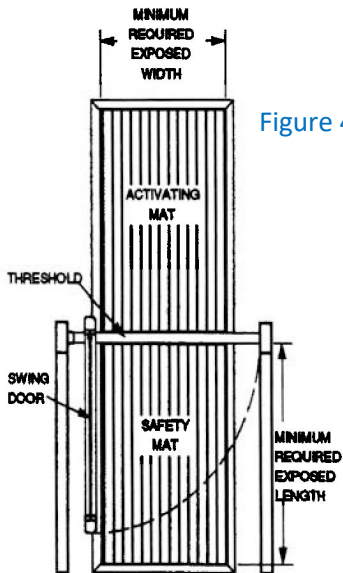
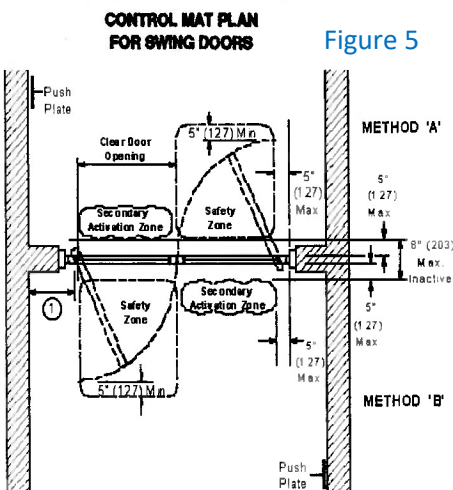


Figure 5



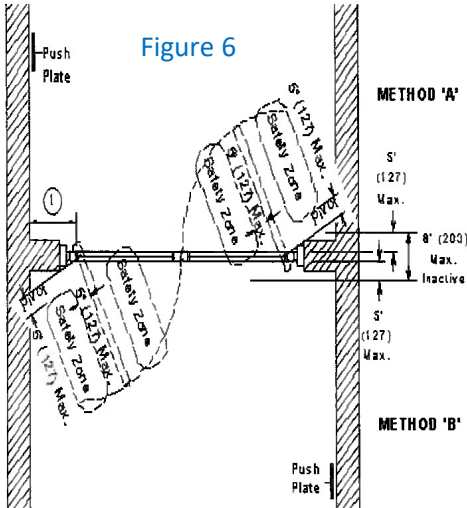


Figure 6

General Safety

Pay attention to the following general safety items and conduct checks periodically where noted.

1. **Force.** Force to prevent the door from closing should not exceed 30 pounds. This can be measured with a force gauge.
2. **Breakout Stop.** Center-pivoted in-swinging doors may be supplied with an emergency breakout stop or switch that will allow the door to open in the direction of emergency egress. Call your supplier for details.

When the door is pushed into the breakout mode, check that door will not activate.

1. **Signage.** The door should have decals properly displayed as follows at a height 50 inches, ± 12 inches from the floor to the centerline of the sign (unless otherwise noted). The decal shall be a minimum of 6 inches in diameter (unless otherwise noted):



Figure 7



Figure 8



Figure 9

- A. If one-way traffic, an arrow (See Figure 7) shall be visible from the approach side of a swinging door, mounted on the door. The decal shall have a green circle surrounding a black arrow on a white background. The words "Automatic Door" with letters $\frac{1}{2}$ inch high shall be visible from the approach side.
- B. If one-way traffic, an international "DO NOT ENTER" decal (See Figure 8) shall be visible from the side that would swing toward pedestrians attempting to travel in the wrong direction. The decal shall have a red circle with the wording, "Do Not Enter", in white letters in the red circle. The words "Automatic Door" with letters $\frac{1}{2}$ inch high shall be visible from the side that would swing toward pedestrians attempting to travel in the wrong direction.
- C. Swinging doors serving two-way traffic shall be marked with a decal, visible from both sides of the door, with the words "Automatic CAUTION Door". (See Figure 9) The letters in the words "Automatic Door" must be at least $\frac{1}{2}$ inch high. The sign shall be made with black lettering on yellow background.
- D. One-way traffic doors shall be marked on the non-swing side with a decal with the words "Automatic Door". The letters in "Automatic Door" must be at least $\frac{1}{2}$ inch high.
- E. Double egress doors shall be marked with a decal, visible from the swing side of the door, with the words "Automatic CAUTION Door". On the non-swing side, the words "Automatic Door" with letters $\frac{1}{2}$ inch high shall be visible.

**AUTOMATIC DOOR
ACTIVATE SWITCH
TO OPERATE**

H An AAADM safety information label should be affixed on the door or frame in a protected, visible location. If you need additional decals or labels for automatic doors, call your automatic door supplier.

4. **Activating Switch.** (Knowing Act) Doors equipped with a manual activating switch shall hold fully open for a minimum of 5 seconds before closing. Doors equipped with a manual activating switch shall have a decal as follows: "Automatic Door. Activate Switch to Operate." The decal should be visible from both sides of the door or the side with the knowing act switch if there is only one. (See Figure 10).
5. **Guide Rails.** Check that guide rails or other barriers or separators are present (two per swing door side) and firmly anchored. Rail length should be the width of the open door or greater. (See Figures 11, 12, 13).
6. **Lock Stile.** With door open, grasp lock stile of door and attempt to move vertically and horizontally. There should be no looseness in the door pivots or in connections between door and operator.
7. **Housekeeping.** Check the door area for tripping or slipping hazards. Check all door panels for damage. Make sure that all hardware and overhead covers are properly secured. There should be no bulletin boards, literature racks, merchandise displays, or other attractions in the door area that would interfere with the use of the door or invite people to stop or stand in the door area.
8. **Traffic Patterns.** Observe traffic patterns. Plan routing so people enter and exit in a straight approach, directly toward the center of the door opening.
9. **Finger Guard.** If installed, inspect the finger guard to see that it is secure and in good repair. (See Figure 13)

IF YOU HAVE A PROBLEM, TURN OFF THE DOOR OPERATING EQUIPMENT AND CALL AN AUTOMATIC DOOR SUPPLIER TO MAKE PROMPT REPAIRS.

LIMITED WARRANTY

Portalp USA, Inc. warrants that the SW10/19 swing operator will be free from defects in material and workmanship under normal use and service for 24 months from the date of manufacture. This warranty will not apply to products that have been installed, altered, or repaired by any person not authorized by Portalp USA, Inc., or have been subjected to misuse or negligence.

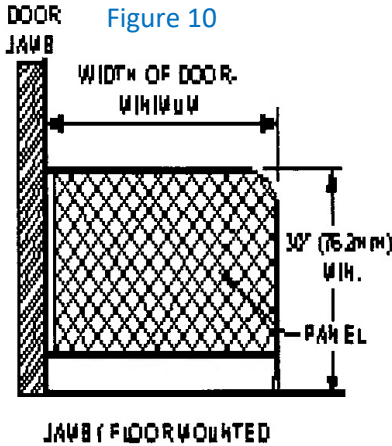


Figure 10

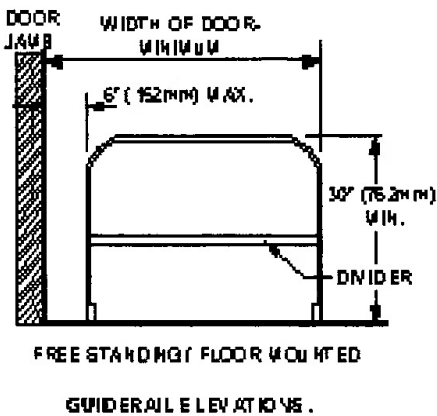


Figure 11

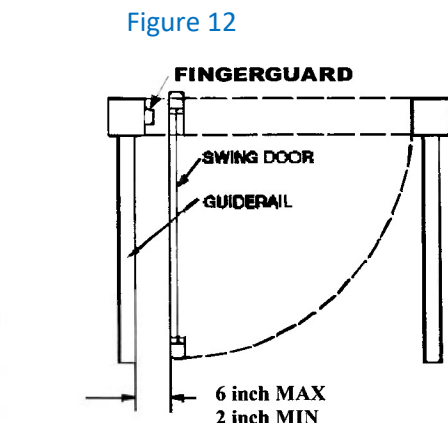


Figure 12

Elevation Showing Allowable Distance From Guardrail to Door

Figure 13